



UNFCCC Country Brief 2014: European Union (28)

A. Key Country Indicators

	Global Rank*	Global share	
CO2 emissions from fuel combustion ¹ (2012)	4	11%	3504.9 Mt CO2 Eq.
Population ¹ (2012)	3	7.1%	507.4 Million
CO2 emissions from fuel comb. / Pop. ¹ (2012)	41		6.91 tCO2 per capita
GDP Size ²	-	-	
GDP Size ²	-	-	
UNDP human development index ³	-		
GDP Structure ² , %	-		
Share of GDP ² , %	-		

*Rankings are illustrative and show how the EU would be positioned if it were a single country. The EU is not considered when calculating the rank positions of other Parties

B. GHG Emissions and Related Indicators⁴

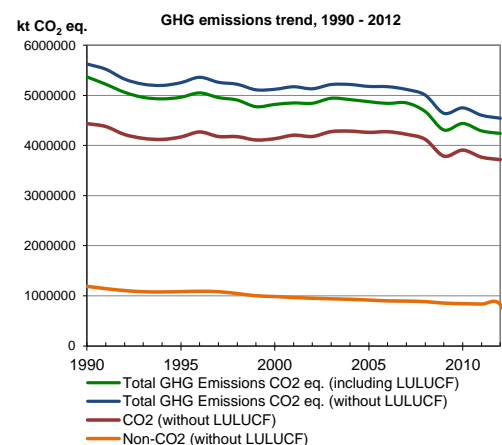
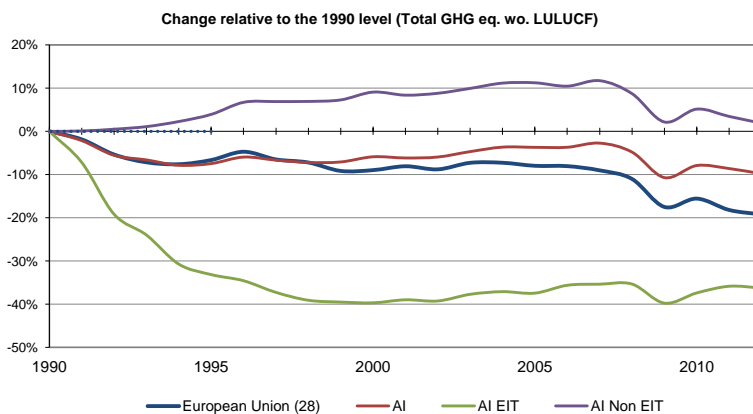
	Trend 1990-2012	Base Year	2000	2005	2010	2011	2012	Base Year 2012	Change (%) 2011 2012
Population (millions)		477.60	487.44	496.06	504.70	505.70	507.40	6.2	0.3
GDP (billions USD 2005 PPP)		9 707.32	12 034.20	13 315.61	13 973.64	14 207.19	14 156.66	45.8	-0.4
TPES (Mtoe)		1 644.66	1 692.65	1 787.02	1 720.73	1 659.66	1 643.59	-0.1	-1.0
GHG emissions ex. LULUCF (kt CO2 eq)		5 626 259.74	5 121 651.89	5 178 201.03	4 751 060.47	4 603 244.77	4 544 224.02	-19.2	-1.3
GHG emissions with LULUCF (kt CO2 eq)		5 367 940.04	4 819 244.62	4 874 085.66	4 439 384.91	4 291 788.07	4 240 671.27	-21.0	-1.2
GDP / Pop. (thous. USD 2005 PPP per capita)		20.33	24.69	26.84	27.69	28.09	27.90	37.3	-0.7
TPES / Pop. (toe per capita)		3.44	3.47	3.60	3.41	3.28	3.24	-5.9	-1.3
GHG / Pop. (t CO2 eq per capita)		11.78	10.51	10.44	9.41	9.10	8.96	-24.0	-1.6
GHG / GDP (kg CO2 eq per USD 2005 PPP)		0.58	0.43	0.39	0.34	0.32	0.32	-44.6	-0.9

C. Energy Profile⁵

	Trend 1990-2012	Base Year	2000	2005	2010	2011	2012	Change (%) Base Year 2012	Imports/exports to production Base Year 2012
Energy production		950.48	949.52	905.19	835.67	806.86	798.94	-15.9	-
Energy imports		1106.69	1270.05	1468.16	1459.54	1442.63	1451.48	31.2	116.4
Energy exports		355.68	443.94	484.27	501.12	494.27	523.71	47.2	37.4

	Trend 1990-2012	Base Year	2000	2005	Base Year	2011	2012	Change (%) Base Year 2012	Share of TPES (%) 1990	2012
Oil		605.79	622.66	636.29	605.79	548.04	526.45	-13.1	36.9	32.1
Oil Shale		5.53	2.88	3.13	5.53	3.98	3.73	-32.6	0.3	0.2
Coal		446.78	315.75	312.20	446.78	280.39	287.49	-35.7	27.2	17.5
Gas		296.94	395.80	445.02	296.94	403.59	392.48	32.2	18.1	23.9
Hydro energy		24.89	30.65	26.81	24.89	26.77	28.82	15.8	1.5	1.8
Nuclear energy		207.31	246.35	260.16	207.31	236.41	230.06	11.0	12.6	14.0
Combust. renewables & waste		46.69	66.34	86.37	46.69	128.55	136.75	192.9	2.8	8.3
Non-combust. renewables		3.43	7.00	12.20	3.43	27.28	32.55	848.1	0.2	2.0
Other (electricity trade)		3.94	2.03	1.41	3.94	0.67	1.65	-58.2	0.2	0.1
TPES		1641.33	1689.45	1783.60	1641.33	1655.68	1639.96	-0.1	100.0	100.0

D. Historical Trends in GHG Emissions⁶



[1] Source :

IEA

[2] Source :

World Bank

[3] Source :

UNDP

[4] Sources : UNFCCC (CRF sub. 2014, sub. #2, v. 1.3) and IEA

[5] Source : IEA

[6] Source : UNFCCC (CRF sub. 2014, sub. #2, v. 1.3)

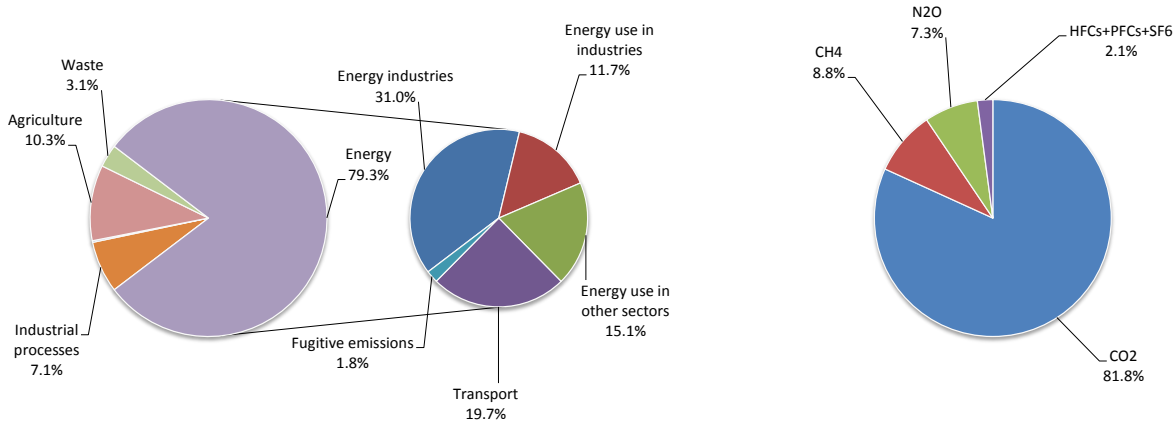


E. Historical Trends in GHG Emissions by Sector⁷

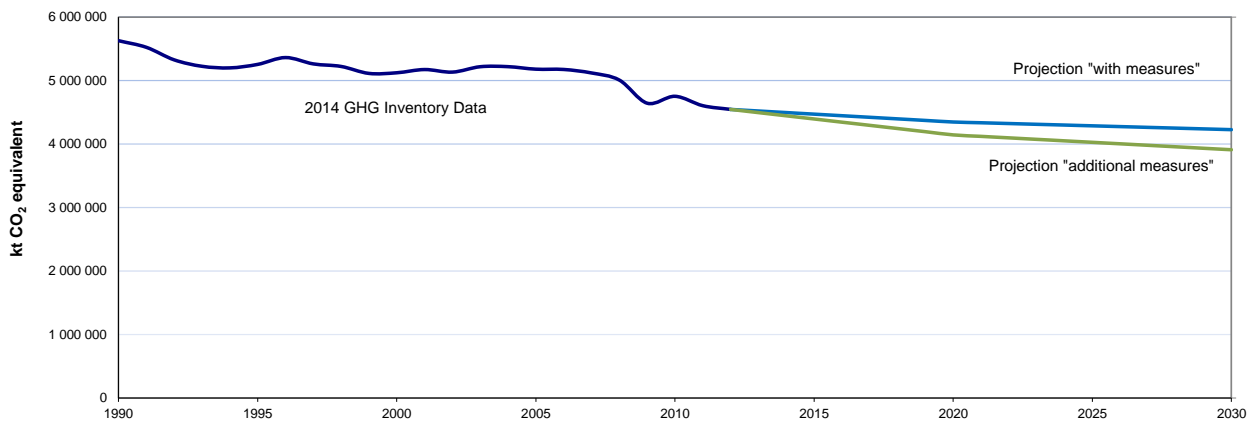
	Trend 1990-2012	GHG Emissions (kt CO ₂ eq.)					Base Year 2012	Change (%)		Share (%)	
		Base Year	2000	2005	2011	2012		2011 2012	Base Year 2012	1990	
1. Energy		4 324 590.03	4 003 589.49	4 102 695.07	3 641 969.23	3 603 784.16	-16.7	-1.0	76.9	76.9	
A1. Energy Industries		1 676 232.39	1 508 242.74	1 594 565.27	1 413 477.57	1 408 893.83	-15.9	-0.3	29.8	29.8	
A2. Manuf. & Construction		860 512.83	706 654.98	663 476.18	552 832.24	533 059.69	-38.1	-3.6	15.3	15.3	
A3. Transport		782 580.02	917 991.71	971 227.20	926 199.50	893 060.04	14.1	-3.6	13.9	13.9	
A4-A5. Other		849 485.83	758 570.58	777 839.43	668 744.84	688 257.42	-19.0	2.9	15.1	15.1	
B. Fugative Emissions		155 778.96	112 129.49	95 586.99	80 715.09	80 513.18	-48.3	-0.3	2.8	2.8	
2. Industrial Processes		461 984.63	393 925.11	403 345.89	332 056.48	320 631.62	-30.6	-3.4	8.2	8.2	
3. Solvents		16 947.75	13 542.30	12 287.79	10 346.80	9 901.86	-41.6	-4.3	0.3	0.3	
4. Agriculture		617 158.38	521 025.74	493 418.99	475 178.33	469 103.56	-24.0	-1.3	11.0	11.0	
5. LULUCF		-258 319.70	-302 407.27	-304 115.38	-311 456.70	-303 552.75	17.5	-2.5	-	-	
6. Waste		205 578.96	189 569.24	166 453.29	143 693.93	140 802.82	-31.5	-2.0	3.7	3.7	
7. Other		NA,NO	NA,NO	NA,NO	NA,NO	NA,NO	-	-	-	-	
GHG Total with LULUCF		5 367 940.04	4 819 244.62	4 874 085.66	4 291 788.07	4 240 671.27	-21.0	-1.2	-	-	
GHG Total without LULUCF		5 626 259.74	5 121 651.89	5 178 201.03	4 603 244.77	4 544 224.02	-19.2	-1.3	100.0	100.0	

F. Emissions by Sector (excluding LULUCF)⁷ 2012

G. Emissions by Gas (excluding LULUCF)⁷ 2012



H. Actual and Projected GHG Emissions (excluding LULUCF)⁸



I. Further Information

[UNFCCC GHG Data Interface](#)
[Annual GHG Inventory Submissions](#)
[Submitted INDCs](#)
[Sixth National Communications](#)
[Submitted Biennial Reports](#)
[Focal Point and Ratification Status of the Convention and the Protocol](#)

[IEA Data Services](#)
[World Bank Data](#)
[UNDP Open Data](#)

^[7] Source : UNFCCC (CRF sub. 2014, sub. #2, v. 1.3)
^[8] Source : UNFCCC (CRF sub. 2014, sub. #2, v. 1.3 and BR-CTF sub. 2014, v2.0)
 Note: The definition of a Parties geographical extent may vary between sources